

Technical drawing of a rectangular plate. The drawing consists of two views: a top view and a front view. The top view is a horizontal rectangle with a length dimension of 410. The front view is a vertical rectangle with a height dimension of 260. Both views are drawn with thin black lines and have dimension lines with arrows indicating the measurements.

Technical drawing of a rectangular plate. The drawing consists of two views: a top view and a front view. The top view is a horizontal rectangle with a length dimension of 455. The front view is a vertical rectangle with a height dimension of 260. Both views are drawn with thin black lines and have dimension lines with arrows indicating the measurements.

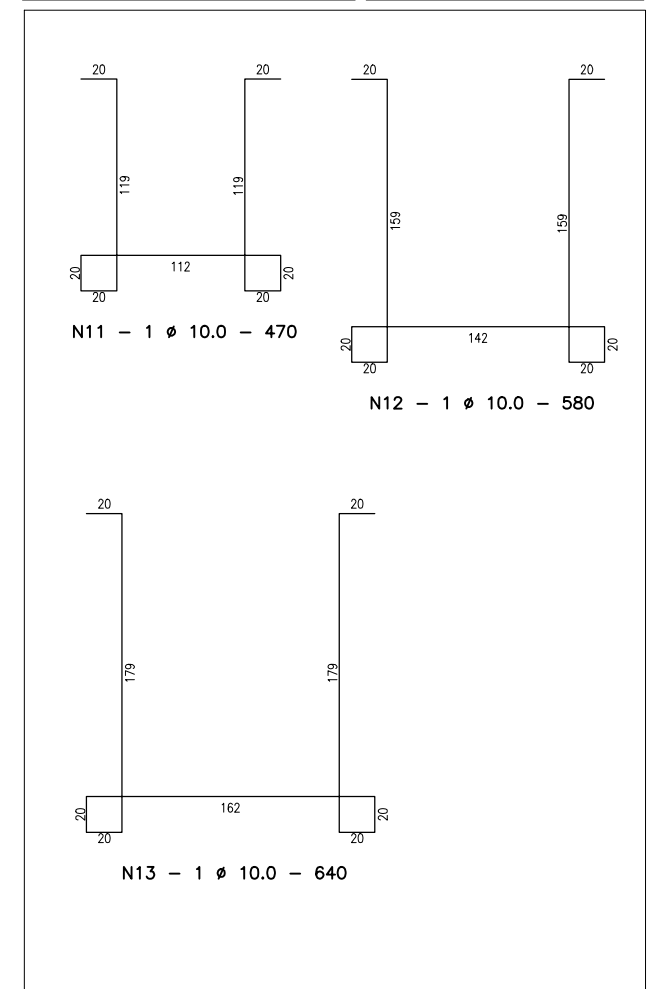
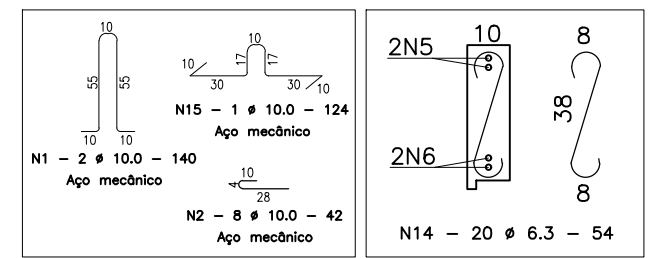
Technical drawing of a stepped profile. The top horizontal edge has a total length of 315. The profile has a total height of 215. The right vertical edge is divided into two segments: a top segment of 45 and a bottom segment of 215. The bottom horizontal edge has a total length of 227. The profile consists of a large rectangular section on the left and a smaller rectangular section on the right, which is 88 units wide and 45 units high. The top surface of the smaller section is 315 units long. The bottom surface of the smaller section is 88 units long. The total height of the profile is 215 units. The total width of the profile is 227 units.

Technical drawing of a stepped profile. The profile consists of a horizontal top edge, a vertical drop, a horizontal middle section, another vertical drop, and a horizontal bottom edge. Dimensions are indicated as follows:

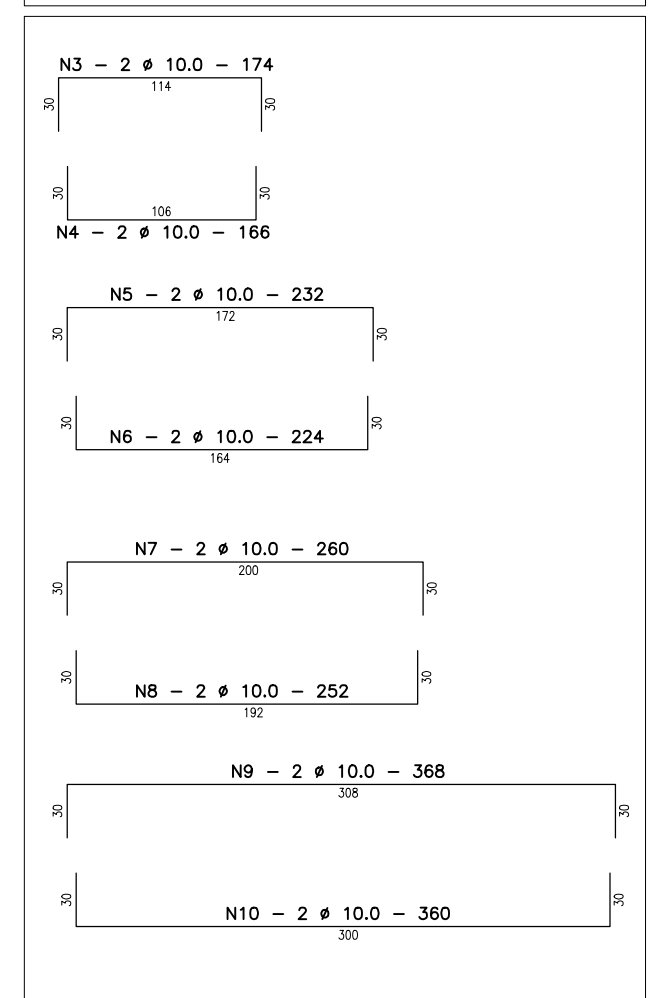
- Top horizontal edge: 360
- First vertical drop: 45
- Second vertical drop: 215
- Bottom horizontal edge: 272
- Horizontal distance from the left edge to the start of the second vertical drop: 88

Technical drawing of a rectangular plate. The drawing consists of two views: a top view (plan) and a front view (elevation). The top view is a rectangle with a horizontal dimension of 225. The front view is a rectangle with a vertical dimension of 260. The two views are aligned vertically, with the top view positioned above the front view. The dimensions are indicated by dimension lines with arrows at the ends, and the values are written next to the dimension lines.

Technical drawing of a composite shape. The top part is a horizontal bar with a total width of 151. It is divided into three segments: a left segment of width 120, a middle segment of width 44, and a right segment of width 10. The bottom part is a large rectangle with a total width of 140 and a total height of 150. It contains two smaller rectangles: one on the left with a width of 87, and one on the right with a width of 60 and a height of 50. The distance between the right side of the left rectangle and the left side of the right rectangle is 88.

[illegible]

DETALHE P/ ARMAÇÃO



N	Ø	QUANT.	COMPRIMENTO (cm)		MASSA (kg)	
			UNITÁRIO	TOTAL	TOTAL	TOTAL +
1	10	33	140	4.620	28,51	29,83
2	10	99	42	4.158	25,65	26,94
3	10	2	174	348	2,15	2,25
4	10	2	166	332	2,05	2,15
5	10	4	232	928	5,73	6,01
6	10	4	224	896	5,53	5,80
7	10	6	260	1560	9,63	10,11
8	10	6	252	1512	9,33	9,80
9	10	4	368	1472	9,08	9,54
10	10	4	360	1440	8,88	9,33
11	10	1	470	470	2,90	3,05
12	10	1	580	580	3,58	3,76
13	10	3	640	1920	11,85	12,44
14	6,3	128	54	6.912	16,93	17,78

POS	Q	QUANT.	ÁREA (m²)		MASSA (kg)	
			UNITÁRIO	TOTAL	TOTAL	TOTAL + 5%
PA 01	0113	2	10,66	21,32	38,38	40,29
PA 02	0113	1	11,83	11,83	21,29	22,36
PA 03	0113	1	6,3	6,3	11,34	11,91
PA 04	0113	1	7,47	7,47	13,45	14,12
PA 05	0113	1	6,67	6,67	12,01	12,61
PA 06	0113	1	5,85	5,85	10,53	11,06
PA 07	0113	2	5,06	10,12	18,22	19,13
PA 08	0113	1	4,86	4,86	8,75	9,19
PA 09	0113	1	5,88	5,88	10,58	11,11
PA 10	0113	1	1,23	1,23	2,21	2,33
PA 11	0113	1	6,76	6,76	12,17	12,78
PB 01	0113	1	1,6	1,6	2,88	3,03
PB 02	0113	1	2,0	2,0	3,60	3,78
PB 03	0113	2	3,81	7,62	13,72	14,41
PB 04	0113	1	5,0	5,0	9,00	9,45
PB 05	0113	1	2,9	2,9	5,22	5,48

PREFEITURA MUNICIPAL DE CAMPO BOM/RS	CIBRA		A CASA É SUA				
	PROJETO		ESTRUTURAL 1 - RESIDÊNCIA PADRÃO				
	LOCAL		LOTEAMENTO VIDA NOVA - CAMPO BOM/RS				
	PREPARETADO		MUNICÍPIO DE CAMPO BOM				
	RESPONSÁVEL TÉCNICO		MARCELO RUADE PETZINGER				
DESENHO	Numeração	DATA	JANEIRO/2004	ESCALA	1/20	ÁREA	4,24m²
						01/03	